

# Technical Specification for SR800 Industrial 5G Router

---



VERSION:V3.0

---

XIAMEN KEY-IOT TECHNOLOGY CO., LTD  
[www.key-iot.com](http://www.key-iot.com)



# Product Overview

StarRouter 800 (SR800) series products are IoT wireless routers integrating 4G/5G networks and Virtual Private Network (VPN) technologies. Equipped with 4G/5G Wireless Wide-Area Network (WWAN) dual-network backup and Wi-Fi Wireless Local-Area Network (WLAN) technologies, this device provides uninterrupted access to multiple network connections. With comprehensive security features and wireless service capabilities, it delivers high-speed and stable data transmission channels for users.

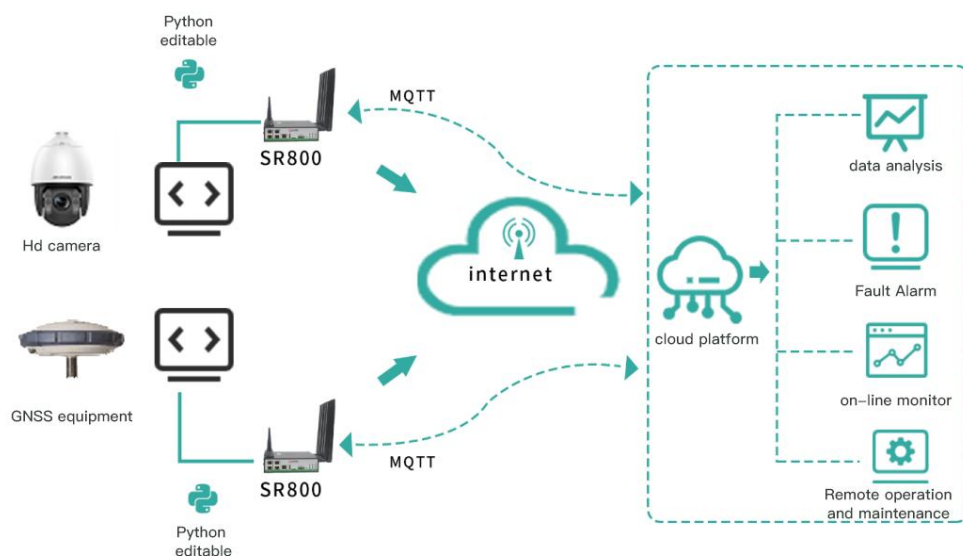
## Product Features

- Supports 5G NR/RedCap networks
- Supports dual SIM cards with mutual backup functionality
- Supports desktop or DIN rail mounting
- Supports dual power supply redundancy
- Supports 5G module band locking and network mode locking
- Supports GPS/BeiDou (optional)
- Supports 5G LAN (optional)
- Supports bridge mode, enabling direct IP assignment from 5G dial-up to connected devices (optional)
- Supports failover between wired and wireless connections
- Supports dynamic routing protocols (OSPF, RIP)
- Supports policy-based routing for traffic splitting
- Supports querying and reporting of device status information
- Supports VLAN configuration, including multiple VLANs with tagged and untagged modes



- Supports Linux system for secondary development, with comprehensive development guidelines provided
- Supports SNMP and StarCloud Platform (Device Management Platform)
- Supports multiple VPN protocols: PPTP, L2TP, IPsec, OpenVPN, GRE, GRE-TAP, VXLAN, etc

## Topology Diagram



## Technical Parameter

### Hardware Performance

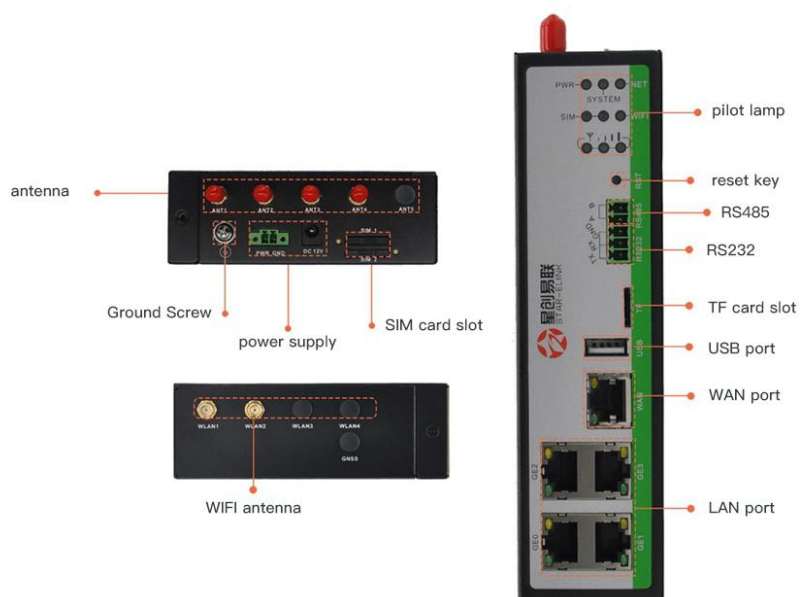
Memory	512MB
FLASH	4GB EMMC
WIFI	Supports 2.4G/5.8G dual-band, theoretical maximum speed of 866.7Mbps. Optional WIFI 6, theoretical maximum speed of 1774Mbps
Network Support	Industrial-grade 5G module
System Time	Time synchronization using NTP technology, with built-in RTC
Interface	
WAN Port	1 (10M/100M/1000M adaptive MDI/MDIX port), LAN/WAN

	Configurable
LAN Port	4 (10M/100M/1000M adaptive MDI/MDIX port)
SIM Card Interface	2 slots (drawer-type card slot, supporting 1.8V/3V SIM/UIM cards)
USB Port	1*USB2.0
Reset	1 ↑(Reset button)
Antenna Interface	4 Ports 4G/5G antenna, 50-ohm impedance, SMA female head interface 2 Ports 2.4G/5.8G antenna, 50-ohm impedance, SMA interface Optional 4 ports
Power Interface	1 x 2-pin connector with 3.81mm pitch, 1 x DC barrel jack
Serial Port	1 RS232 port, 1 RS485 port, and a 5-pin terminal block connector with 3.5mm pitch
Indicators	9 (1 PWR indicator, 1 SYS indicator, 3 signal strength indicators, sim1, sim2, 1 WiFi indicator, 1 NET indicator)
Power Characteristics	
Power	External power adapter (12V 2A)
Operating Voltage	Wide power input DC 9~36V
Standby Power Consumption	300~350mA@12V DC
Operating Power Consumption	450~600mA@12V DC
Operating Conditions	
Operating Temperature	-35~+75°C (-31~+167°F)
Storage Temperature	-40~+85°C (-40~+185°F)
Operating Humidity	5%~95% (non-condensing)
Device Ventilation	Natural heat dissipation ,no noise
Physical Characteristics	
Casing Material	Metal housing
Dimensions	Length*Width*Height 166*126*44mm (excluding antenna and installation accessories)
Installation Method	Desktop placement, DIN rail installation, wall mounting
Weight	Net weight: 0.87KG (excluding antenna and installation accessories) Gross weight: 1.40KG (with accessories and packaging box)
Device Safety and Reliability	
Safety and reliability	Reverse polarity protection, overvoltage protection, overcurrent protection; Ethernet interface built-in 1.5KV electromagnetic isolation protection; RS232/RS485 interface built-in 15KV ESD protection; SIM/UIM card interface built-in 15KV ESD protection
Protection Level	IP30
Certification	CE Certification, Complies with CCC, Rohs
MTBF	≥100,000 hours
Software Features	
Network Access	Supports APN, VPDN, and Network Slicing
Access Authentication	Supports CHAP/PAP authentication
Network Mode	5G Sub-6 SA/NSA/LTE/WCDMA



LAN Protocol	Supports ARP,Ethernet
WAN Protocol	Supports static IP, DHCP, PPPoE, PPP
IP Applications	Supports Ping、Trace、DHCP Server、DHCP Relay、DHCP Client DNS relay、DDNS、Telnet
IP Routing	Supports static routing, dynamic routing protocols (OSPF, RIP), and policy-based routing
NAT Functionality	Supports network address translation
Industrial Protocols	Supports MQTT, MODBUS, and other industrial protocols
Positioning Functionality(Optional)	Supports GPS\Beidou Positioning
<b>Network Security</b>	
Firewall	Full-state packet inspection (SPI), prevent denial of service (DoS) attacks, filter multicast Ping packets, access control lists, URL filtering, Port mapping, virtual IP mapping, IP-MAC binding
Data Security	IPsec VPN/L2TP/PPTP/GRE/OPEN VPN/CA Certificate
<b>Reliability</b>	
Backup Functionality	Supports failover among wired, 5G, and Wi-Fi connections
Online Link Detection	Supports heartbeat detection and automatic reconnection upon disconnection
Built-in Watchdog	Device self-checking technology, device fault self-repair
<b>WLAN</b>	
Protocol Standard	IEEE 802.11b/g/n/ac/ax(Optional)
Rate	Supports up to 1774M
Safety Features	Open system, shared key, WPA/WPA2 authentication; WEP/TKIP/AES encryption
Working Modes	AP and Client (WiFi STA)
Transmission Distance	100M(The actual transmission distance depends on the environment)
<b>Intelligent Features</b>	
Integrated DTU Functionality	Supports TCP, UDP transparent transmission mode, TCP Server mode, supports Modbus RTU to Modbus TCP bridge, support DCUDP, DCTCP mode
<b>Network Management</b>	
QoS Management	Supports bandwidth limitation, IP rate limiting
Configuration Mode	Supports Telnet, WEB, SSH, and Console configurations
Upgrade Mode	Supports WEB upgrade and FOTA upgrade
Logging Functionality	Supports local system logs, remote logs, and serial port output logs
Network Management Functionality	Support KEY-IOT Device Manager "Cloud Device Management" platform, batch management
Simple Network Management	Supports SNMP v1, v2, and v3, and SNMP TRAP
Traffic management	Supports traffic threshold setting, supports traffic statistics and traffic alarm functionality
Maintenance tools	Ping, Route tracing
Status Query	System status, modem status, network connection status, route status

# Product Interface



# Product Dimension

单位:mm  
unit:mm

